



**Welcome to
Mills Park
Middle School
May 1st & 2nd, 2023**

**BORN IN A SPIRIT OF COLLABORATION
ESTABLISHED 2010**

Welcome from Dr. Raiford, Principal



welcome





PTSA

Updates from MPMS PTSA

We have your spirit wear!
The PTSA has many spirit wear items, and we will be taking care of your 6th Grade Team T-shirts this fall at Open House!



Updates from MPMS PTSA

We need a few more great
Volunteers!

- Spirit Wear
- Staff Appreciation
- 8th Grade Events
- Book Fair
- Mills Madness
- Communications



contact: president@mpmsptsa.org



Meet Our Presenters



Shantel Summerfield
Assistant Principal



Sarah Francavilla
Counselor



Alison Vroome
Counselor



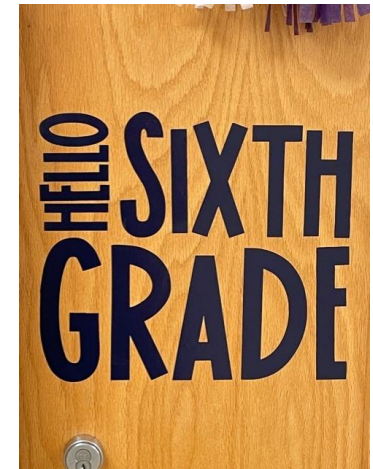
Kelly Barber
AIG Teacher



Lisa Bye
*Special Education
Teacher*



Mary Grace Kibler
AIG Teacher



Parent Handout

MILLS PARK MIDDLE SCHOOL

Welcome Rising 6th Grade Open House Welcome

6th Grade Changes

The transition from elementary to middle school can be both exciting and stressful:

- Change for students: physical, emotional, intellectual, social
- Change for parents: developing evolving relationships with their child, supporting their child's growing independence and responsibility, interacting with a team of teachers
- Change in school experience: subject area focus with core teachers, class changes, interaction with a larger number of students, evolving special talents

Contact Information

Mills Park Middle School
441 Mills Park Dr.
Cary, NC 27519
919-466-1500

www.wcpss.net/millsparkms

Parent Pointers

Emphasize the Positive:

Discuss the fact that middle school provides more opportunities for individuality, freedom, and friends.

Foster Independence:

Help your child develop a sense of ownership of their work. Encourage THEM to seek teacher assistance.

Teach Organizational Skills:

- Keeping backpacks and binders organized.
- Using separate, different colored notebooks for each class.
- Using the agenda (provided to all 6th graders) daily.

Stay Up-to-Date:

Check Team/Teacher/Counselor websites and monitor grades on PowerSchool once school has started.

Encourage Participation:

Encourage your child to seek out clubs and social activities to meet friends and become a part of the school community.

Continue (or even increase!) Involvement:

Parents often see middle school as a time to become hands off; however we recommend parents increase monitoring of grades, school communication, and your child's involvement with social media use during this transition.

CORE CURRICULUM

MPMS Rising 6th Grade Open House

Math

Units of Study:

- Number Systems
- Expressions and Equations
- Ratios and Proportions
- Geometry
- Data and Statistics



Over the Summer:

- Multiplication Facts through 12 must be memorized!
- Practice standard algorithm for multiplication and long division.
- Be prepared for nightly homework.

Science

Units of Study:

- Thinking Like a Scientist
- Matter
- Energy
- Earth Science
- Plants and Ecology
- Space



Over the Summer:

- Vocabulary is critical! Review science concepts/vocabulary on a daily basis.
- Read nonfiction passages about interesting science topics.
- Don't be afraid to ask questions! All good scientists have to ask questions!

ELA

Units of Study:

- Myths: Not Just Long Ago
- Poetry: Voices of Adversity
- Fiction/Nonfiction: Sustaining the Oceans
- Developing an Argument



Over the Summer:

- READ!!!
- Students will receive a novel reading list at the start of the year.
- This curriculum emphasizes close reading and the student's ability to provide textual evidence.

Social Studies

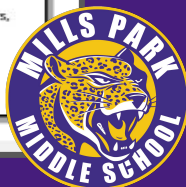
Units of Study:

- Geography
- Religion
- Achievements
- Politics
- Economics
- Social Structures
- Decline of Civilizations
- Middle Ages
- Renaissance and Reformation



Over the Summer:

- Work on organizational skills and study habits by keeping a calendar, making lists, setting aside time to read, etc.
- Read nonfiction passages about social studies topics.



Middle School Topics We Will Cover

- **PTSA**

- updates, spiritwear

- **What to Expect at MPMS**

- changes, schedules, team model, lockers, grades, PowerSchool, Technology

- **Academics and Electives**

- course offerings, homework, special education, AIG, SSA

- **Student Life**

- extracurricular activities, sports, PBIS, SEL

- **Parent Pointers**

- helpful hints, communication, volunteer opportunities

- **Additional Resources**

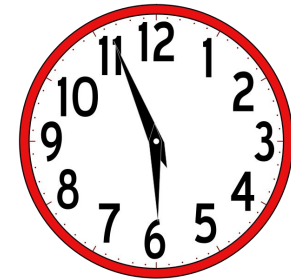




What to Expect at MPMS

Typical Daily Schedule for 6th Grade

Period	Time	Class
1st	8:15-9:15	Core 1
2nd	9:18-10:18	Core 2
3rd	10:21-11:21	Core 3
4th	11:24-11:49	Lunch A/LT
	11:55-12:20	Lunch B/LT
5th	12:23-1:23	Core 4
6th	1:27-2:12	Elective 1
7th	2:15-3:00	Elective 2



Leopard Time is an remediation/enrichment/support block where students can get help from teachers. At times, teachers will request that specific students or group of students attend for support.





Middle School Team Model



Middle School Team Model

5 Teams of 6th Grade Teachers:

- **Ambassadors**
- **Challengers**
- **Guardians**
- **Pathfinders**
- **Trailblazers**

Each team consists of:

- 4 Core Teachers (Math, Language Arts, Science, Social Studies)
- 2 Counselors for the Grade Level
- Approximately 120 students per team
- Those 120 students are on the same team and have the same 4 Core teachers; however they do not travel with the same 30 students as a group from class to class.



Lockers

- Students will **not** be assigned lockers during the 2023-2024 school year.
- **How the school will help students manage supplies?**
 - Chromebooks have eliminated textbooks. Much of the work students will need can be accessed digitally
 - Shared binders (among subjects)
 - Folders
 - Workbooks and novels
 - No change of clothes needed for PE
 - Locations in classroom to store specific materials
- **What can I do as a parent to help my child manage their school supplies?**
 - Check your child's backpack periodically to make sure it is cleaned out
 - Rolling backpacks are allowable (if desired)



The Future is Near: Collaborative Spaces

The Four C's

WCPSS Mission Statement: WCPSS will provide a relevant and engaging education and will graduate students who are collaborative, creative, effective communicators and critical thinkers.

So... What does this look like in action?



Collaborating with friends



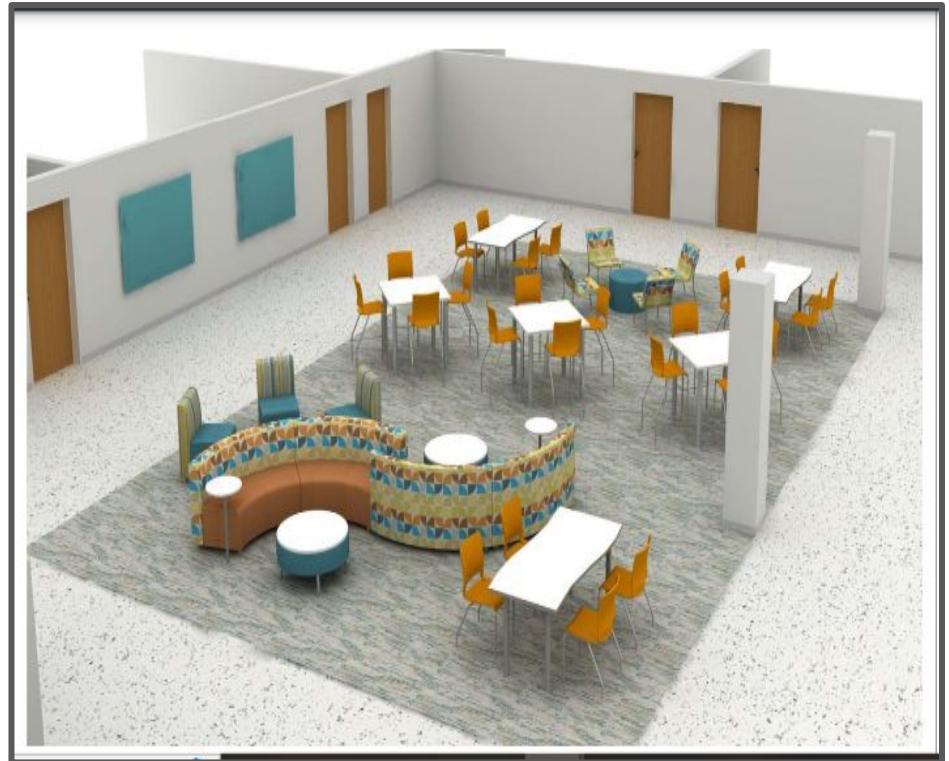
Parent Meetings



Grade Level Fellowship & Meetings



Collaborative Spaces



Collaborative Spaces



Grading Policy

At MPMS, we believe that grades should accurately reflect a student's knowledge of the Standard Course of Study and communicate this performance to stakeholders.

- 10 point grading scale:

A - 90-100

B - 80-89

C - 70-79

D - 60-69

F - 0-59

- [Grading Policy](#)



How does Elementary standards-based grading differ from Traditional Middle School Grading?

ELEMENTARY: Standards-Based grades break down the subject matter into smaller “learning targets.” Each target is a teachable concept that students should master by the end of the course. Student learning on each target is recorded with a 1, 2, 3, or 4.

MIDDLE: students are primarily measured by the percentage of work successfully completed.

Traditional Report Card		Standards-based Report Card	
Class	Q1	Class/Standards	Q1
Mathematics	95% = A	Mathematics	3
		I can define a number sentence	2
		I can solve number sentences that have brackets	2
		I can solve number sentences that have braces	3
		I can create number patterns using two rules	3
		I can estimate the answers of number sentences	2
		I can find the sum of two 2-digit numbers	3
		I can find the difference of two 2-digit numbers	2
		I can find the product of two 2-digit numbers	2
		I can find the quotient of two 2-digit numbers	3



Traditional Grading Scale

Letter Grade	%
A	90-100%
B	80-89%
C	70-79%
D	60-69%
F	0-59%

Standards-based Grading Scale

Points	Notes
4	Advanced
3	Meets Expectations for Target
2	Partial Mastery of Target. Demonstrates partial understanding, or can perform portions of the target with assistance.
1	Little or No Mastery. Cannot demonstrate mastery, even with instructor assistance.

We strongly believe in the **Growth Mindset** and believe student performance can be improved. However, to help you make sense of the change from elementary school to middle school grading, please note that:

- A 4 in Standards based grading is often equivalent to an A in Traditional Grading.
- A 3 in Standards based grading is often equivalent to an A-B in Traditional Grading.
- A 2 in Standards based grading is often equivalent to a B-D in Traditional Grading.
- A 1 in Standards based grading is often equivalent to an D-F in Traditional Grading.





PowerSchool/Home Base

PowerSchool/Home Base gives parents and students access to real-time information including attendance, grades and assignments.

Current MPMS Parents with Powerschool Access - If you are having issues logging into the Parent Portal and have completed the reset password process online and still cannot access your account, please email **mpmstech@wcpss.net** for help.

Student Access - *Students new to Wake County will gain access to the Student Portal during the first week of school. Current WCPSS students that have an account and are not able to access it, must also wait until the first week of school for an access reset.*

How do parents get started?

- **Option 1** : Fill out the [Powerschool Parent Portal Access - Notary](#) form (2 pages) and have it notarized. You may then drop off this form to MPMS during summer office hours or you can mail the form to Mills Park Middle School, 441 Mills Park Dr. Cary, NC 27519. We cannot accept faxed or emailed copies of this form.
- **Option 2**: Fill out the [Powerschool Parent Portal Access - PhotoID](#) form (2 pages). You must then scan the completed form and a CLEAR picture of the parent/guardian photo ID and email to **mpmstech@wcpss.net**. Please DO NOT bring this form to the school.

Note: Your student's ID number is the same as their lunch number from elementary school.

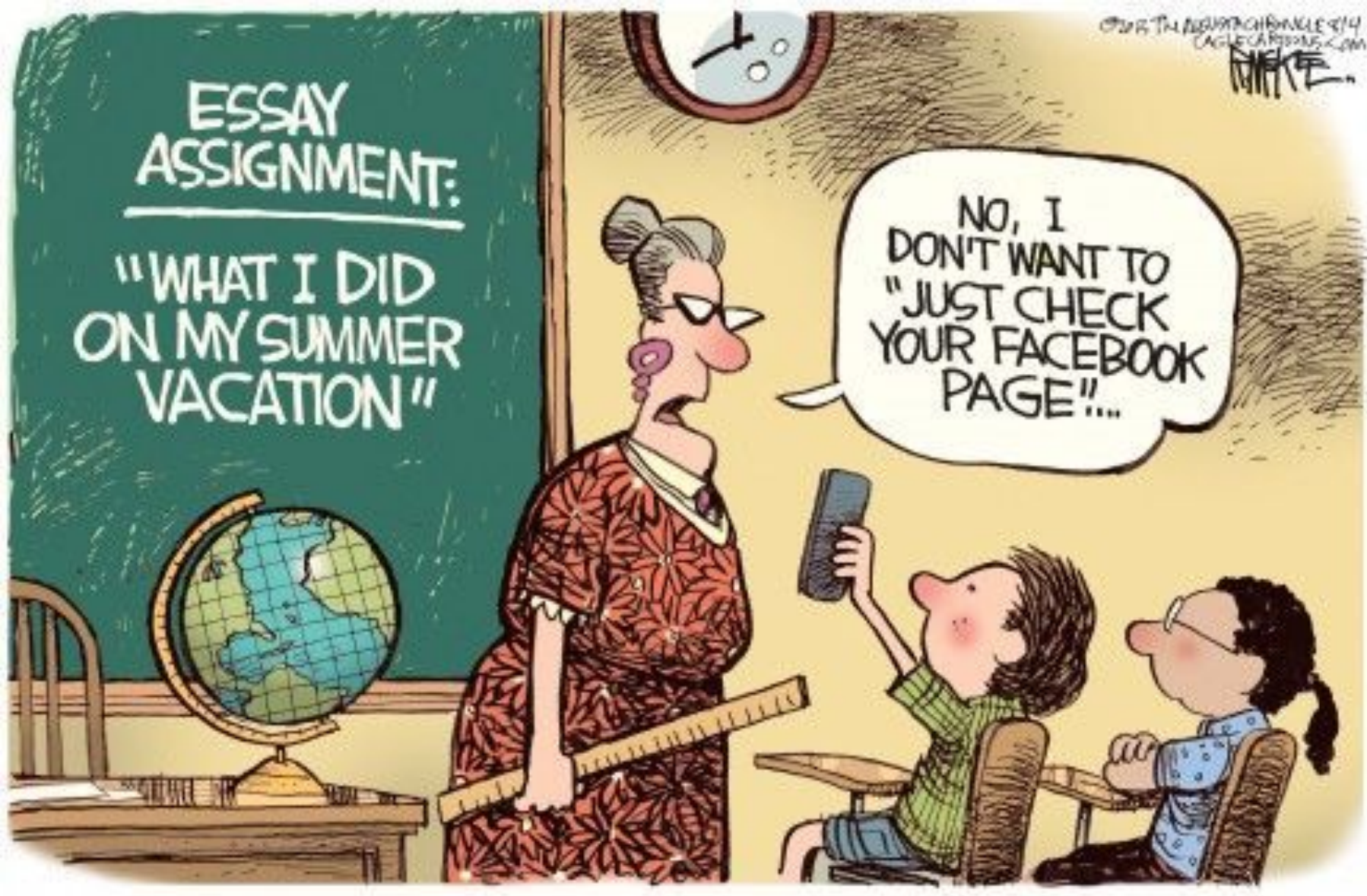
Forms will be processed as quickly as possible with limited staff during the summer.



ESSAY
ASSIGNMENT:

"WHAT I DID
ON MY SUMMER
VACATION"

NO, I
DON'T WANT TO
"JUST CHECK
YOUR FACEBOOK
PAGE!"...



Technology/Cell Phone Expectations

Chromebooks

WCPSS chromebooks have been issued to all students and are the expected and preferred devices for instructional purposes.

*WCPSS devices are **required** for all assessments, which includes school-based assessments, district-wide assessments and end-of-year testing. Personal devices **cannot** be used for testing purposes.*

Cell Phones

Parents, please help minimize off-task behavior and discipline issues:

- Keep in mind that student cell phones cannot be used for instructional purposes and should remain off and/or on silent in student backpacks during the school day (7:45 AM - 3:00 PM)
- Please refrain from calling/texting your child during the day as it encourages students to break school policy.
- Students are permitted to call parents from the front office to relay messages such as illnesses or changes in after school plans.





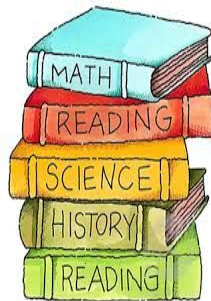
Academics and Electives

Course Offerings

Core Classes

Required Core Classes (common to all WCPSS middle schools):

- **Language Arts**
- **Math:**
 - Math 6
 - Math 6+
 - Math 7+
- **Science**
- **Social Studies**



Elective Classes

Electives are non-core classes

- All students must take Health/PE elective all three years of middle school
- Electives help to broaden learning by exposure to the arts, technology and world language
- Course descriptions are available in the Wake County Middle School Program Planning Guide:
<http://www.wcpss.net/middle-school>





Math Placement



The middle school will review placement recommendations from the elementary school along with relevant end of year data and consider any teacher and/or parent waivers to determine final placement decisions.

Final placement decisions will be made and communicated by late July/early August.

HB986 (scoring a Level 5 on the most recent EOG) and Single Subject Acceleration are the only options for skipping a middle school math course.

Math 6 – An on grade-level math course covering 1 year of content.

Math 6 Plus – An ***accelerated*** math course that offers 1.5 years of content in one school year. It includes all sixth grade math standards and roughly one-half of seventh grade math standards. To be placed in Common Core Math 6 Plus the student should have scored a Level 4 or 5 on the most recent (EOG) Test.

Math 7 Plus will be offered only to students who successfully completed (Grade of D or better) Math 6 Plus in 5th grade or successfully passed the SSA Test.



Homework

Students can expect daily homework and requires responsibility and dedication.

It may be assigned by multiple teachers:

- It is helpful to stay organized and set aside a specific time to complete homework assignments
- Use an agenda or make a list to keep track of assignments and due dates
- Communicate with teachers and check team websites



Academically and Intellectually Gifted & Talent Development

- In WCPSS, universal screening takes place in 3rd grade
- A WCPSS student identified as AIG in elementary school remains AIG in middle and high school.
 - No additional testing is required.
- Math placement is based on elementary school recommendation and performance in 5th grade; there is no AIG Math course.
- AIG ELA students are placed in a cluster class with identified students.
- Remember, AIG is not just a label. AIG coursework is designed to meet the needs of gifted students and, at times, will be more rigorous.
- MPMS service delivery methods will be covered at AIG meeting in Fall.



Special Education

MPMS Special Education Department is collaborating with Elementary Schools to support the transition process.

All Special Education Students have a Case Manager. The Case Manager facilitates all IEP related meetings and oversees the implementation of IEP services and accommodations. Case managers will contact parents at the beginning of the school year.

Course Offerings

- In-class resource (ICR)
Math
- In-class resource (ICR)
Language Arts
- Resource Literacy and Math
(Essentials)
- Curriculum Assistance
Elective
- Middle School
Reading/Decoding



Electives

- Registration for 6th grade electives should have already taken place with 5th grade counselors.
- Classes are not ranked and therefore; cannot be guaranteed in any order.
- Students are randomly assigned electives by a computer generated process.
- Most students will take one elective per semester (2 per year) unless they take band which is the only yearlong elective option.
- Elective classes will be finalized in late summer.



Public Speaking/Debate

(The Newspaper and Yearbook class is for 8th grade only.)

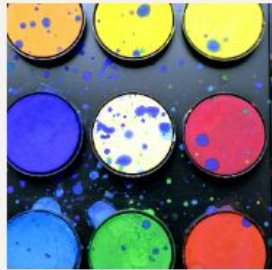


Introduction to Theater



Beginning Band

(This is a yearlong course; students taking band are to select it as their only elective option.)



Visual Arts Exploratory



Career and Technical Education Electives (CTE)

(The 2023 Keyboarding/Digital Literacy course has changed to Keyboarding/Minecraft.)



Spanish Beginning Less Than 1 Year

Click [here](#) to learn more about our 6th grade elective course offerings.



Healthful Living

- All students participate in the Healthful Living elective as one of their electives for the year. It's comprised of Health and Physical Education class.
- Athletic shoes with laces are required. Students should wear or bring sneakers and comfortable clothing on weeks when they are in the gym.
- Students will follow a rotation schedule.
- Students do not take showers – please use deodorant. 😊





Student Life

Extracurricular Activities

Student Clubs & Activities

- Get involved! Clubs and activities are offered during and after school. Examples include Coding, Leadership, Running, and many more. Please see the MPMS website [here](#) for more information.

Potential Social Events

- School dances, talent shows, performances
- Field trips

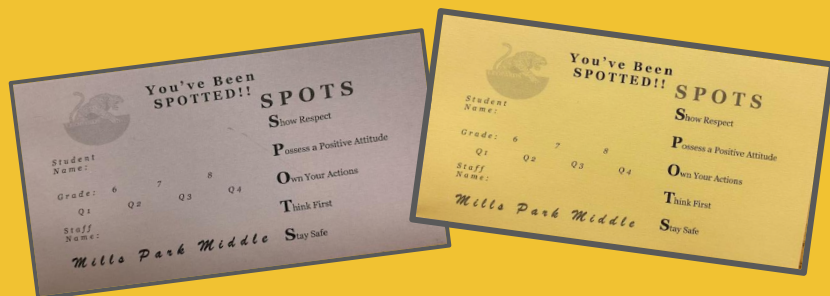


Positive Behavior Intervention Support (PBIS)

SHOW YOUR SPOTS!!!

MPMS students are acknowledged for showing good character and supporting their school community:

- S.P.O.T.S. tickets
- Monthly S.P.O.T.S. Celebration
- Weekly Drawings
- School Store
- School-wide Quarter Celebrations



Social Emotional Learning (SEL)



SEL lessons provided by school counselors teach critical social competencies necessary for academic and life success such as: resiliency, self-management, and responsible decision-making skills.

Self-Awareness

Mindfulness

Setting Goals

Growth Mindset

Self-Management

Making Connections

Transitioning to Middle School





Parent Pointers

Communication

- Weekly Smore Newsletter/Email
- [Teacher Websites](#) and [Learning Logs](#)
- School Messenger
- Talking Points



Please make sure phone numbers and email addresses are updated in PowerSchool. If you notice an error, please contact the Data Manager, Dana Magoon at dmagoon@wcpss.net **after July 1st** or your child's elementary school prior to this date.



Mrs. Salmon's Class

About Me

Resources & Practice

MODULE 1- Myths: Not Just
Long Ago

MODULE 2-Voices of Adversity

MODULE 3-To be determined

General Classroom Information

Contact



SEPTEMBER UPDATES

[Daily Learning Log](#)

[Leopard Time Info](#)

[September](#)
[October](#)
[November](#)

[January](#)
[February](#)
[March](#)

[May](#)
[June](#)

September 2020 - For links, see slides linked in google classroom

Monday	Tuesday	Wednesday	Thursday	Friday
31	1 Ch. 3 Challenge/Response WS Read chapter 4	2 Read chapter 5 Fill out 2 rows on page 15 4 Group questions	3 Mid-unit 1 Quiz	4 Library orientation Read Chapter 6
7 Holiday	8 Lesson 8: CHEW act 1 (pg 17-18) Hero's Journey Video Google Form	9 Lesson 9: CHEW acts 2-3 (19-20)	10 Lesson 10: Workbook p. 26 (together) Graded: Google Doc (based on WB p 27-28)	11 Finish Lesson 10 on Google Classroom for 5 points Read TLT chapter 7
14 Lesson 11: Intro to RACE Read TLT chapter 8 (3rd/5th Meet with Mrs. Summerfield)	15 Lesson 11: Intro to RACE Read TLT chapter 8 (1st/2nd Meet with Mrs. Summerfield)	16 Lesson 12 Writing a RACE paragraph	17 Review for assessment	18 (Asynchronous) Review continued
21	22	23	24	25

Parent Involvement: Possible Volunteer Opportunities

- Team Parent
- Chaperone Field Trips
- Get involved with our PTSA
- Sign up to become a substitute
- Assist with Quarterly Celebrations





Additional Resources



MPMS Website



WCPSS Transportation

Additional Resources



PowerSchool



WCPSS Rising 6th Info



Carpool



Talking Points



Attendance Policy



Counselor's Corner



More Information

- **Mills Park Website:**

<http://millsparkms.wcpss.net/index.html>

- **Middle School Math Site:**

<https://www.wcpss.net/Page/38745>

- **Middle School Program Information:**

<http://www.wcpss.net/middle-school>

- **WCPSS AIG Website:**

<https://www.wcpss.net/Page/92>





6th Grade Contact

Shantel Summerfield

6th Grade Assistant Principal

919.466.1500 ext. 20821

ssummerfield@wcpss.net

Mary Grace Kibler

AIG Teacher

919.466.1500 ext. 20830

mkibler@wcpss.net

Lisa Bye

*Special Education Department
Chair*

919.466.1500

lbye@wcpss.net

Alison Vroome

6th Grade Counselor

919.466.1500 ext. 20828

avroome@wcpss.net

Sarah Francavilla

6th Grade Counselor

919.466.1500 ext. 20825

sfrancavilla@wcpss.net

Margaret Berger

School Nurse

919.524.3760

mberger@wcpss.net



Coming Soon

- **6th Grade Open House Camp** dates will be shared over the summer.
 - Will provide an opportunity for students and parents to see the building
 - Will help ease student's anxiety about the transition to middle school prior to the first day of school
- **6th Grade Supply List** will be available on the MPMS website no later than the 1st week in July.
 - [MPMS 2021-2022 Supply List](#) *(for reference)*
 - Team specific supply list

